



Holden Road, Woodside Park, N12 7AG  
£700,000 Leasehold Council Tax Band

**REAL ESTATES**  
Est. 1981

Estate Agents · Residential Sales · Investments · Lettings

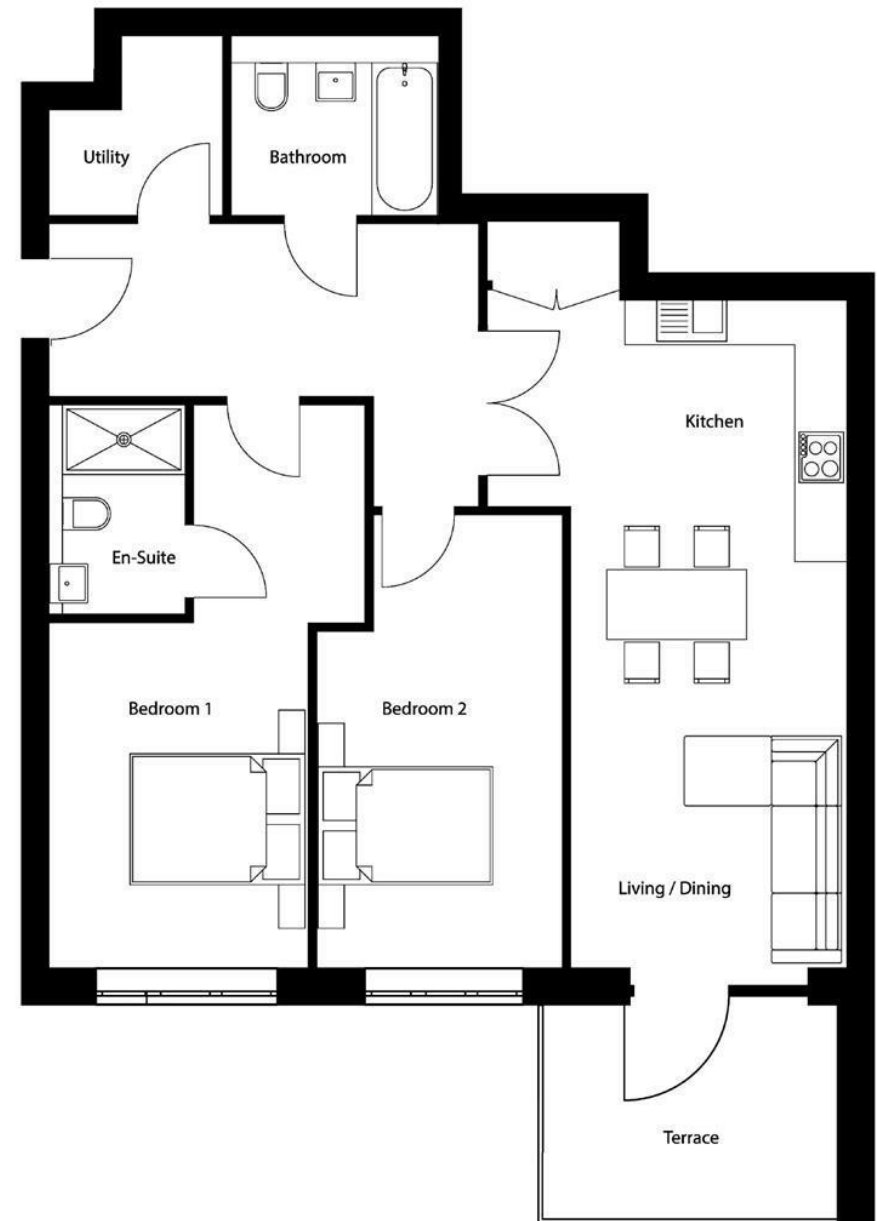


LAST 3 UNITS REMAINING. PRICES FROM £700,000. An opportunity to acquire this superb 1ST FLOOR apartment of 926 sq ft in this new development of just 34 exquisitely finished apartments with SECURE UNDERGROUND PARKING, excellent transport links, great local amenities and green spaces. The Westbury offers the very best of urban and rural living.

The apartments are exceptionally well fitted with high specification designer kitchens and bathrooms, underfloor heating throughout, and are pre-wired for modern entertainment systems.

\* 2 BEDROOMS \* 2 BATHROOMS (1 EN SUITE) \* PRIVATE TERRACE  
\*

NB. photos shown are of a different apartment



Energy Efficiency Rating	
	Potential
Very energy efficient - lower running costs	
(92-100) <b>A</b>	
(81-91) <b>B</b>	
(69-80) <b>C</b>	
(55-68) <b>D</b>	
(39-54) <b>E</b>	
(21-38) <b>F</b>	
(1-20) <b>G</b>	
Not energy efficient - higher running costs	
England & Wales	
EU Directive 2002/91/EC	